



茨城大学
Ibaraki University

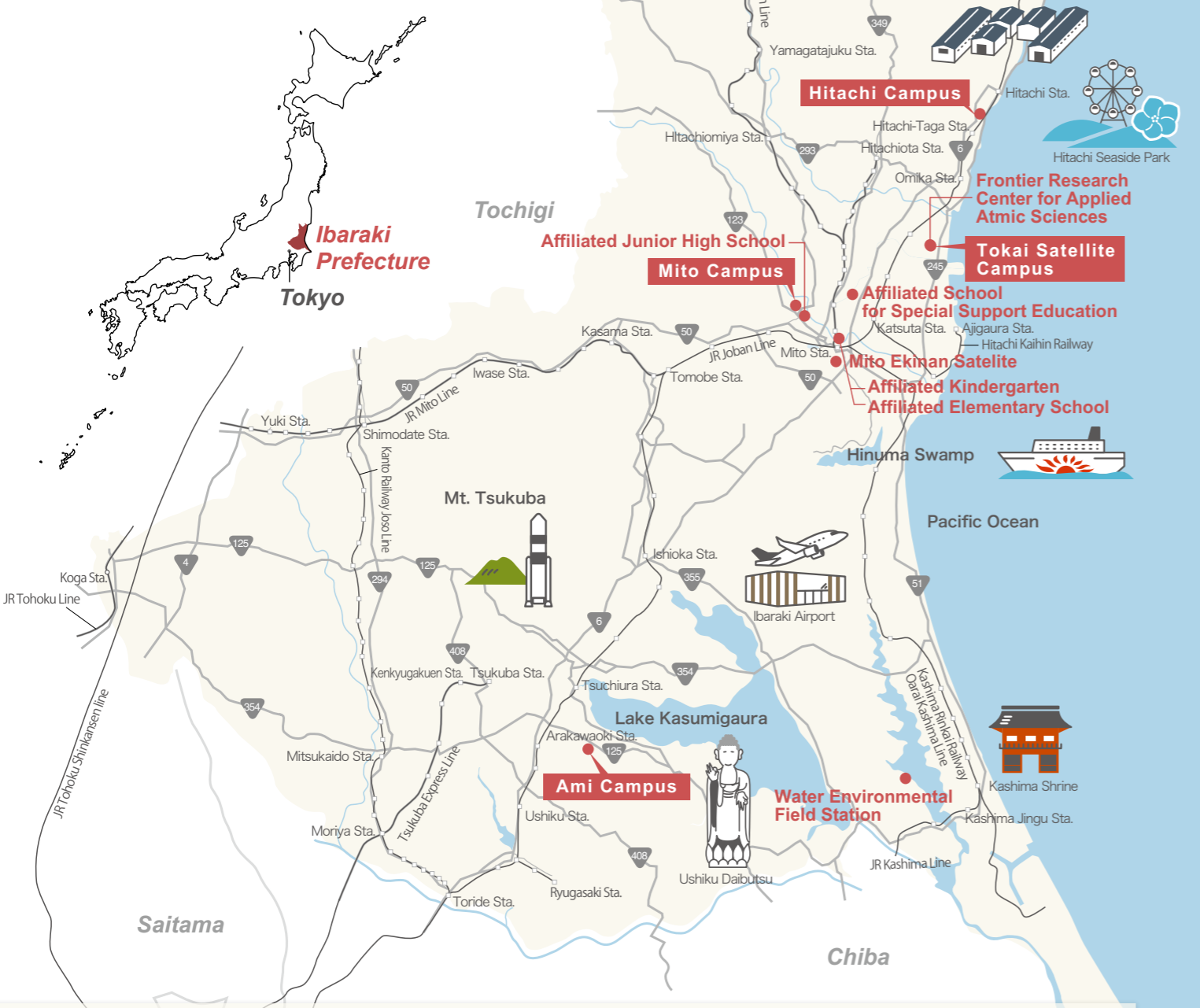
IBARAKI

University, JAPAN

2021-2022



Where is Ibaraki University?



- Administration Bureau
- College of Humanities and Social Sciences
- College of Education
- College of Science
- University Library
- Institute for Liberal Arts Education
- Research and Innovation Center
- Admission Center
- University Health Center
- Center for Teacher Education
- Center for Instrumental Analysis
- Global and Local Environment Co-creation Institute (GLEC)
- Social Collaboration Center
- International House for Foreign Students (977, Hori, Mito, 310-0903)

- College of Agriculture
- Ami Branch of University Library
- Gene Research Center
- Center for International Field Agriculture Research & Education (4668-1, Ami, Inashiki, 300-0331)
- Food Innovation Center

Mito Campus

2-1-1, Bunkyo, Mito, 310-8512



Ami Campus

3-21-1, Chuuo, Ami, Inashiki, 300-0393



Hitachi Campus

4-12-1, Nakanarusawa, Hitachi, 316-8511



Tokai Satellite Campus

162-1, Shirakata, Tokai, Naka, 319-1106



- College of Engineering
- Hitachi Branch of University Library
- Center for Information Technology
- Research and Innovation Center

- Frontier Research Center for Applied Atomic Sciences

Ibaraki University is located in Ibaraki Prefecture, facing the Pacific Ocean to the east and bordering the Tokyo metropolitan area to the south. We have campus locations in the Northern, Central, and Southern regions of the prefecture and we provide unique education and research opportunities by utilizing our own regional characteristics.

Other

- Affiliated Kindergarten 2-6-8, Sannomaru, Mito, 310-0011
- Affiliated Elementary School 2-6-8, Sannomaru, Mito, 310-0011
- Affiliated Junior High School 1-3-32, Bunkyo, Mito, 310-0056
- Affiliated School for Special Education 1955, Tsuda, Hitachinaka, 312-0032
- Water Environmental Field Station 1375, Oou, Itako, 311-2402
- Center for Astronomy 627-1, Ishitaki-Kamidai, Takahagi, 318-0022
- Izura Institute of Arts and Culture 727-2, Izura, Ootsu, Kitaibaraki, 319-1703
- Mito Ekinan Satellite 2-2-35-2F, Sakuragawa, Mito, 310-0801

Access to Ibaraki University

Mito Campus

Take the Ibaraki-Kotsu bus bound for Ibadai (via Sakae-cho) from JR Mito Sta. (North Gate) Bus Terminal 7, and get off at "Ibadai-Mae" (about 25 min.)

Hitachi Campus

1. Take the Hitachi-Dentetsu bus bound for Heiwadai3 or Kosakidai4 via Chuo-sen from JR Hitachi Sta. (Central Gate), and get off at "Ibadai-Mae" (about 10 min.)
2. Take the Hitachi-Dentetsu bus bound for Hitachi-Sta.3 or 4 via Chuo-sen from JR Hitachi-Taga Sta., and get off at "Ibadai-Mae" (about 10 min.)

Ami Campus

Take the Kanto-Tetsudo bus bound for Ami-Chuo-Kominkan from JR Tsuchiura Sta. (West Gate) Bus Terminal 1 and get off at "Ibadai-mae" (about 20 min.)

Colleges

Diploma Policy



Large perspective of the world



Knowledge and skills in a speciality field



Problem-solving ability and communication skills



Attitude as a conscious member of society



Focus on regional revitalization

Humanities and Social Sciences
Mito Campus

[Contemporary Social Studies] [Low, Economics and Management] [Humanities]

■ Degree : Bachelor of Contemporary Social Studies
Bachelor of Social Science
Bachelor of Arts in Humanities

Education
Mito Campus

[Teacher Training Course] [Course for School Nurse Teacher]

■ Degree : Bachelor of Education

Science
Mito Campus

[Sciences]

■ Degree : Bachelor of Science

Engineering
Hitachi Campus

[Mechanical Systems Engineering] [Electrical and Electronic Systems Engineering] [Materials Science & Engineering] [Computer and Information Sciences] [Urban and Civil Engineering] [Mechanical Systems Engineering (Flex course)]

■ Degree : Bachelor of Engineering

Agriculture
Ami Campus

[Food and Life Science] [Regional and Comprehensive Agriculture]

■ Degree : Bachelor of Agriculture

Graduate Schools / Diploma Course for Graduate Students

Humanities and Social Sciences Mito Campus

[Humanity Sciences]
[Social Sciences]

■ Degree : Master of Arts

Education Mito Campus

[Professional Practice in Education]

■ Degree : Master of Education
(Professional Degree Program)

Science and Engineering

Mito Campus, Hitachi Campus and Other Areas

Master's Program:

[Quantum Beam Science] [Science]
[Mechanical Engineering] [Electrical and Electronic Engineering] [Urban and Civil Engineering] [Computer and Information Sciences]

■ Degree : Master of Science, Master of Engineering

Doctoral Program:

[Quantum Beam Science] [Complex Systems Science] [Society's Infrastructure Systems Science]

■ Degree : Doctor of Science, Doctor of Engineering, Doctor of Philosophy

United Graduated School of Agricultural Science

[Biological Production Science] [Applied Life Science] [Symbiotic Science of Environment and Natural Resources] [Agricultural and Environmental Engineering] [Science of Agricultural Economy and Symbiotics Society]

■ Degree : Doctor of Agriculture

Advanced Course for Special Support Education Mito Campus

[Education for Children with Intellectual Disabilities]

Agriculture Ami Campus

[Agriculture]

■ Degree : Master of Agriculture

Campus Facilities for International Students



International Lounge



International House for Overseas Residents



Student Dormitory

iOP : Ibaraki University's educational collaboration with regional and global partners

Ibaraki University offers a unique education system composed of an integrated off-campus study program named "internship off-campus program (iOP)" in addition to its standard quarter-based curriculum. The iOP program, offered during the 3rd quarter of the junior year, enables students to select from a variety of off-campus activities such as studying abroad, experiencing internships at corporations or municipalities, engaging in volunteer activities or conducting independent research or fieldwork for the entire quarter. Students can select, plan and undertake their iOP at any of Ibaraki University's partners institutions. This includes 73 partner universities worldwide, reputable local companies and municipal governments and regional organizations. The aim of the iOP is to provide a platform for students to hone their communication and problem-solving skills: a core competency that is required in today's rapidly changing world.



Research

Ibaraki University undertakes research with a whole university approach to promote interaction between colleges and various sectors, and to encourage an unique cross-disciplinary research. In Ibaraki Prefecture, there are unique research facilities such as Tokai Village with a group of nuclear related facilities and Tsukuba Science City, and research efforts in cooperation with these facilities are our global strengths.



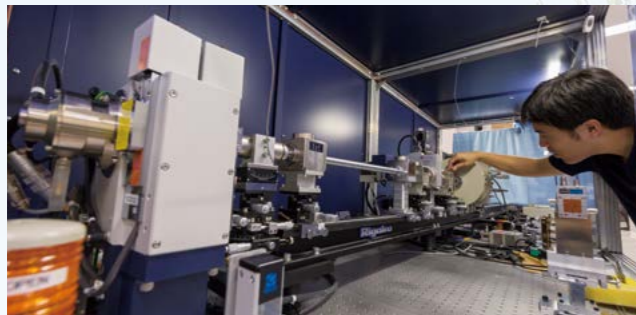
Estimating the impact of climate change and research for creating a sustainable society

Global and Local Environment Co-creation Institute (GLEC) is promoting investigation and research on the effects of climate change and adaptation measures in the Asia-Pacific region. We serve as the partner university in the master's program 'Climate Change and Development Program' at Vietnam - Japan University (VJU) opened in 2018 and contribute for a sustainable society with the resources of our research and education.



Vietnam-Japan University Climate Change and Development Program

Vietnam-Japan University (Graduate School of Sustainability Science) is a new initiative being established with the participation and cooperation of multiple universities in both countries under an agreement between the Japanese and Vietnamese governments. Ibaraki University has been the host university for the Climate Change and Development Program since 2018. The curriculum for this program includes overseas internship at Ibaraki university.



Advanced research in quantum beam science

Ibaraki University has a satellite campus adjacent to the world's leading high intensity proton accelerator facility (J-PARC). Our strength is the research of quantum beam science (ex.X-rays, neutrons, muon) and the development of researcher and engineer. We hold an international symposium of quantum beam science every year and are recognized as the leader for research in quantum beam science.

Topics



Research on regional issues and local history

We will conduct systematic research on regional issues such as the revitalization of the mountainous and depopulated areas. In addition, we promote regional history research through activities, such as rescue of damaged materials.



Educational research crossed subjects / territories

We value cross-disciplinary research that contributes to solve complex issues of modern education.



Front-line space science research

We are involved in research using radio telescopes, and international plans for next-generation gamma-ray observatories. With National observatory and other universities, we contribute an important part in the global research network.



Development of regional industry innovation

In order to contribute to regional industry innovation, we manage cooperation with local research institutions and companies, and conduct research in engineering fields such as metal material analysis and process development.



Food innovation

Safe and secure food to all over the world
Based on the Center for International Field Agriculture Research and Education that acquired GAP and the Food Innovation Center, we will establish a comprehensive field of food life sciences.

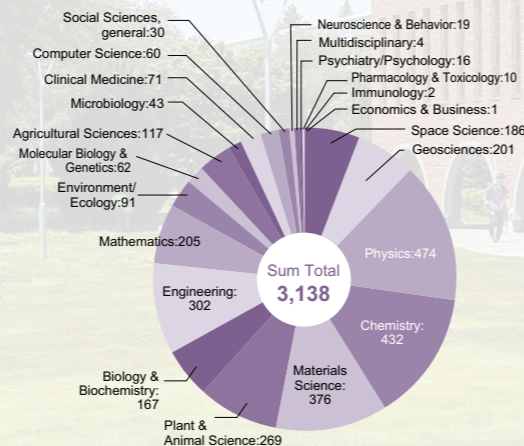


Regional branding based on heritages regarding Okakura Kakuzo(Tenshin)

We hold and maintain the Okakura Kakuzo (Tenshin) heritages, including Rokkakudo. We will contribute to regional revitalization based on the assets and will pursue research in art and culture.

iRIC (Research and Innovation Center, Ibaraki University)

iRIC was established in 2018 as the organization responsible for the research system at Ibaraki University. It consists of three divisions: industry-academia-government division; academic research division; and research compliance division. iRIC retains research support staff who work to coordinate research support and joint research studies.



Research areas of publications in Ibaraki University, 2011-2020 (InCites)

International Exchange Program

By communicating its educational and research outcomes widely to the international community and engaging in international exchange and joint research for students and faculty, Ibaraki University strives to promote education and academic research that is of an international standard, and to share the outcomes of that education and research with the world. We're promoting international exchange and joint research with our partner universities and institutes in 23 countries.

As of Apr 25, 2021

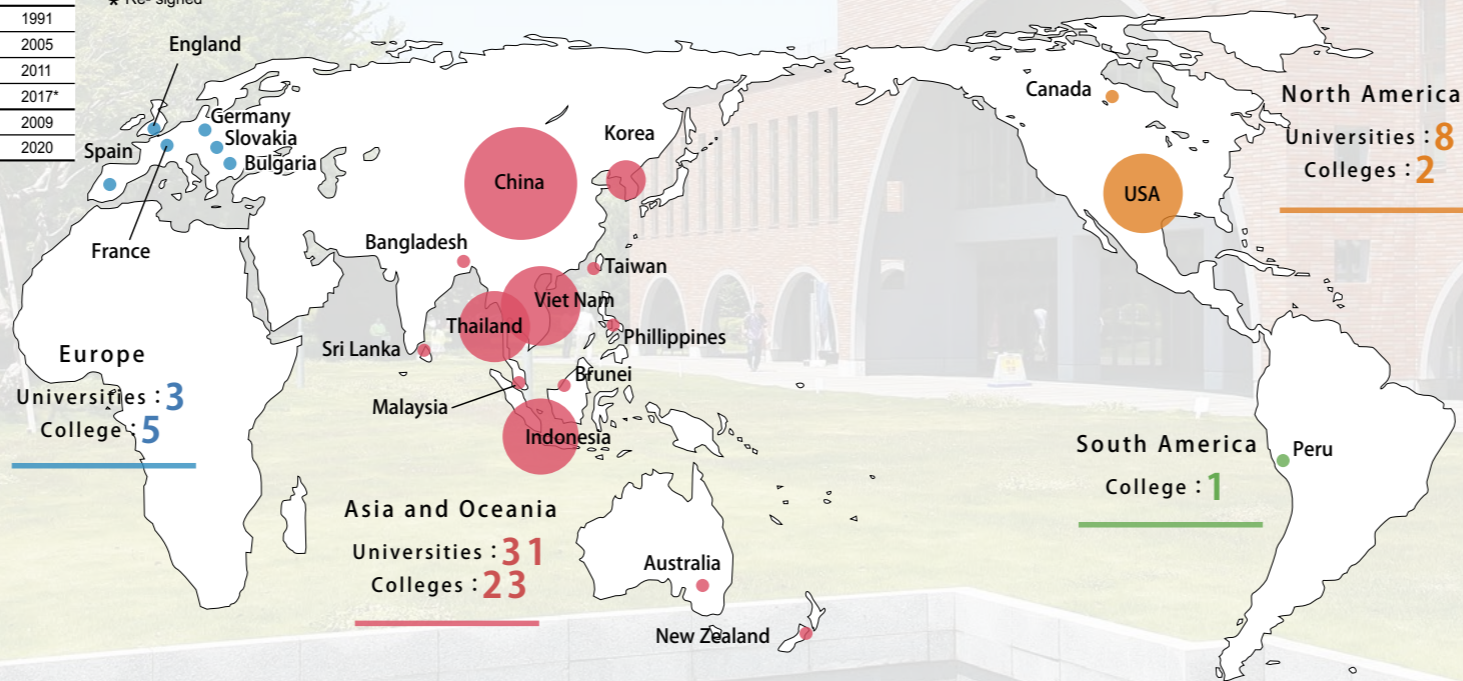
Countries / Area	University	Date of Agreement
North America and South America		
USA	● Eastern Washington University	1999
	● Tennessee Technological University	2013
	● The Pennsylvania State University	2016*
	● University of Alabama at Birmingham	2011*
	● University of Wisconsin, Superior	2006*
	● Montana State University	2017*
	● Idaho State University	2017
Canada	○ School of Continuing Studies at McGill University	2011
	○ TRIUMF	2017
Peru	○ Universidad Nacional Agraria La Molina	2001
Europe		
Spain	● Alcala University	2014
France	○ IGR-IAE Rennes Graduate School of Management, Université de Rennes 1	2017
United Kingdom	● University of Worcester	2016
	○ Gloucestershire College	2015
	○ Newcastle University	2018
Republic of Bulgaria	● Sofia University	2015
Germany	○ Forschungszentrum Julich GmbH	2018
Slovakia	○ Comenius University	2019
Oceania		
Australia	● University of Technology, Sydney	2016
	○ Australian Nuclear Science and Technology Organisation	2019
	● Curtin University	2019
New Zealand	○ College of Science, University of Canterbury	2017
East Asia		
China	● Fudan University	1988
	● University of International Relations	2010
	● Zhejiang University	2002*
	● Inner Mongolia University for the Nationalities	2016
	● East China Normal University	2017
	○ College of Nuclear Science and Technology, Beijing Normal University	2008
	○ Hebei University of Technology	2006
	○ Institute of Theoretical Physics Academia Sinica	1998
	○ Nanjing Agricultural University	2001
	○ Northwest A&F University	2010
	○ Wuhan University of Science & Technology	2006
	● Chungbuk National University	1991
	● Inje University	2005
	● Kookmin University	2011
	○ the Radiation Science, Korea Atomis Energy Research Institute	2017*
Korea	● Providence University	2009
	○ National Taiwan Normal University	2020
Taiwan	○ National Taiwan Normal University	2020

Countries / Area	University	Date of Agreement
South Asia		
Bangladesh	○ Bangladesh Agricultural University	2006
Sri Lanka	○ Faculty of Agriculture, University of Ruhuna	2009
India	○ CSIR-Indian Institute of Chemical Technology	2019*
Southeast Asia		
Indonesia	● Bogor Agricultural University	2009*
	● Gadjah Mada University	2010*
	● Sriwijaya University	2015
	● Udayana University	2009*
	● Universitas Pendidikan Indonesia	2011
	● Universitas Jenderal Soedirman	2016
	● Andalas University	2017
	○ Institute for Research and Community Service Institut Teknologi Bandung	2014
	● RISTEKDIKTI	2018
	○ Research Center for Biology, Indonesian Institute of Sciences	2019*
Viet Nam	● Vietnam National University, Hanoi	2010
	● Vietnam-Japan University	2018
	○ Hue University, College of Foreign Language	2013
	○ Institute for Northeast Asian Studies Vietnam Academy of Social Sciences	2015
	○ VNU University of Science, Vietnam National University, Hanoi	2014
	○ Hanoi University	2019
Kingdom of Thailand	● Dhurakij Pundit University	2015*
	● Kasetsart University	2014*
	● Phuket Rajabhat University	2013
	● Chiang Mai University	2016
	● King Mongkut's University of Technology Thonburi	2018*
	○ Faculty of Agriculture, Khon Kaen University	2011
	○ Faculty of Science, Ubon Ratchathani University	2017
	○ Faculty of Agriculture, Naresuan University	2018
○ School of Agro-Industry and School of Science, Mae Fah Luang University	2020	
Philippines	● De La Salle University	1997
Malaysia	● Universiti Sains Malaysia	2016
	● Universiti Kebangsaan Malaysia	2019
Brunei Darussalam	● Universiti Brunei Darussalam	2016

● Agreement with Universities
○ Agreement with Colleges Institutes
■ Student Exchange Agreement
★ Re- signed

Academic Exchange Agreements with Foreign Universities and Colleges

Ibaraki University, as a bridge for international exchange, has partnership agreements with 73 universities and institutes in 23 countries and regions, through which we conduct academic and student exchanges.



Asian International Mobility for Students (AIMS) Program

AIMS program is an international joint education program based in Asia that came out of a joint student exchange support project by the Malaysian, Indonesian and Thai governments. Ibaraki University has participated in AIMS since 2013 aiming to improve students' language and communications skills and to develop people who will be able to engage with society with a global outlook.

Japanese Language and Culture Program

This program provides students with an opportunity to learn and to improve their Japanese language skills and to deepen their understanding of Japanese culture and society. Students take Japanese language classes, and Japan-related classes taught in English. Intermediate-advanced students can also take college classes taught in Japanese. A wide range of cultural and educational activities are also provided during the semester.

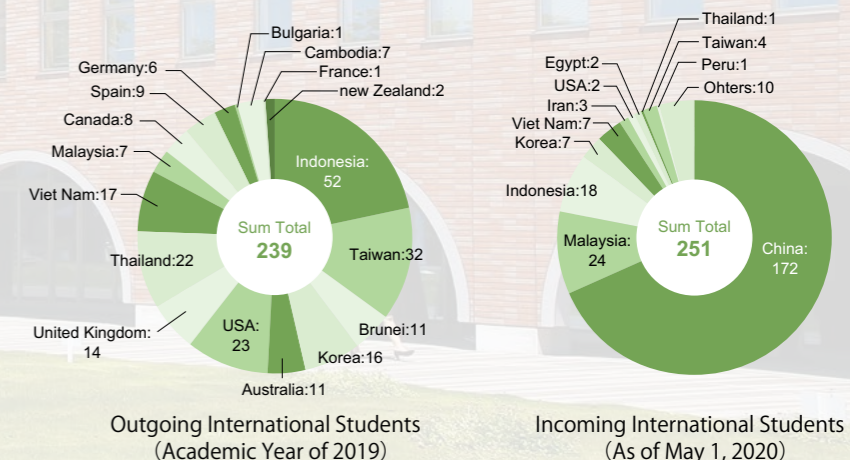


Cross-border exchanges and learning under the pandemic of COVID-19

The number of countries and regions where international students came from and students who were trying to study abroad had been steadily increasing; however the pandemic of COVID-19 continued. In 2020, the Global Education Center held online exchange events. One of them was "Let's Connect with Friends around the World! Ibaraki University International Exchange Program (Tsunagaro Project)". Participants learned about Japanese culture such as rice balls and origami and had discussions after watching movies together. Despite the negative influence of the continuing COVID-19 pandemic on study abroad programs, we were able to expand our exchange programs with our partner universities through the online exchange events. Cross-border exchange and learning channels are likely to continue to expand.



Outgoing and Incoming International Students



Note: The graphs indicate the number of outgoing and incoming international students in the Academic Year of 2019 instead of the one in the Academic Year of 2020. Because there were few students who went abroad to join international exchanges in 2020 due to the pandemic of COVID-19 from 2020. Please refer to the back of this book for the latest number of international students.

Facts & Figures

Number of Students

Colleges	Departments	Total	Sum Total
Humanities and Social Sciences	Department of Contemporary Social Studies	546(311)	1,503 (782)
	Department of Law, Economics and Management	506(182)	
	Department of Humanities	451(289)	
[Humanities]	[Humanities and Communication Studies]	3(2)	29 (8)
	[Social Sciences]	26(6)	
Education	Teacher Training Course	1,025(581)	1,179 (729)
	Course for School Nurse Teacher	148(147)	
	Course for Information and Culture	3	
	Course for Human Environmental Education	3(1)	
Science	Sciences	914(244)	914(244)
	Mechanical Systems Engineering	536(40)	
Engineering	Electrical and Electronic Systems Engineering	514(31)	2,411 (304)
	Materials Science and Engineering	442(114)	
	Computer and Information Sciences	376(40)	
	Urban and Civil Engineering	270(64)	
	Mechanical Systems Engineering (B)	165(10)	
	Mechanical Engineering	29	
	Biomolecular Functional Engineering	6(1)	
	Materials Science and Engineering	9(1)	
	Electrical and Electronic Engineering	30(2)	
	Media and Telecommunications Engineering	12	
Agriculture	Intelligent Systems Engineering	14	693 (381)
	Intelligent Systems Engineering (B)	8(1)	
	Food and Life Science	337(220)	
	Regional and Comprehensive Agriculture	351(159)	
	Biological Production Science	3(2)	
Sum Total			6,729 (2,488)

Note: 1 Departments in () are discontinued. 2 The figures include international students. 3 The figures in parentheses indicate the number of female students.

Graduate Schools	Programs	Total
Humanities and Social Sciences	Master's Program	50 (30)
	[Master's Program]	38 (17)
Education	Professional Degree Program	54 (20)
	Master's Program	852 (95)
Science and Engineering	Doctoral Program	85 (16)
	Master's Program	99 (48)
Sum Total		1,178 (226)
	Agricultural Science	Doctoral Program

Diploma Course	Major	Total
Advanced Course for Special Support Education	Education for Children with Intellectual Disabilities	13 (9)

Admission to Ibaraki University (Academic Year of 2021)

Colleges	The Number of Applicants	Enrollment
Humanities and Social Sciences	1,754	372
Education	1,436	283
Science	980	218
Engineering	2,316	561
Agriculture	484	168
Total	6,970	1,602

Graduate Schools	Programs	The Number of Applicants	Enrollment
Humanities and Social Sciences	Master's Program	37	18
	Professional Degree Program	42	40
Education	Master's Program	499	445
	Doctoral Program	27	24
Agriculture	Master's Program	60	42
	Total	665	569

Diploma Course	Major	The Number of Applicants	Enrollment
Advanced Course for Special Support Education	Education for Children with Intellectual Disabilities	22	13

Number of Graduates

Colleges	Departments	Total	Sum Total
Humanities and Social Sciences	Department of Contemporary Social Studies	120	341
	Department of Law, Economics and Management	113	
	Department of Humanities	108	
Humanities	Social Sciences	13	29
	Humanities and Communication Studies	16	
Education	Teacher Training Course	229	271
	Course for School Nurse Teacher	35	
	Course for Information and Culture	3	
	Course for Human Environmental Education	4	
Science	Sciences	199	199
	Mechanical Engineering	86	
Engineering	Biomolecular Functional Engineering	83	541
	Materials Science & Engineering	42	
	Electrical and Electronic Engineering	69	
	Media and Telecommunications Engineering	46	
	Computer and Information Sciences	71	
	Urban and Civil Engineering	60	
	Intelligent Systems Engineering	47	
	Intelligent Systems Engineering(B)	37	
	Biological Production Science	3	
	Bioresource Science	1	
Agriculture	Regional Environmental Science	2	155
	Food and Life Science	76	
	Regional and Comprehensive Agriculture	73	
	Sum Total		

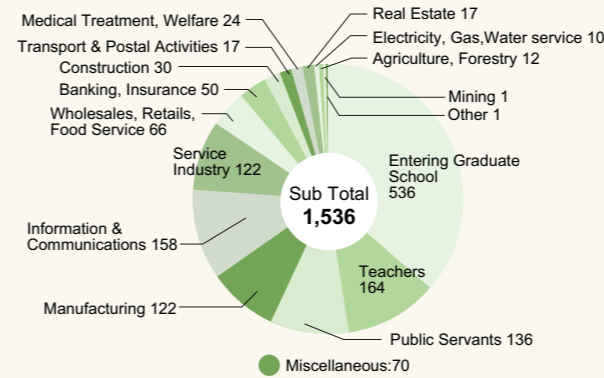
Graduate Schools	Programs	Total
Humanities and Social Sciences	Master's Program	20
	Master's Program	31
Education	Professional Degree Program	16
	Master's Program	363
Science and Engineering	Doctoral Program	25
	Master's Program	31
Sum Total		486

Diploma Course	Total
Advanced Course for Special Support Education	13

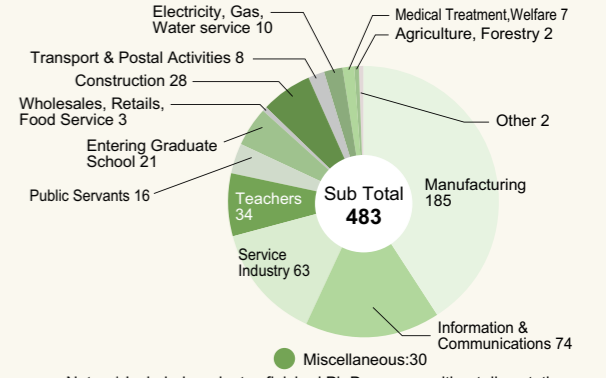
Graduate School	Programs	Theses	Sum Total
Graduate School	Doctor	20	25
	Master of Education	16	16
	Master	445	445
United Graduate School of Agricultural Science (Ibaraki University Students)		7	7

Major Fields of Employment of Graduates

Undergraduates(Academic Year 2020) Sum Total 1,536

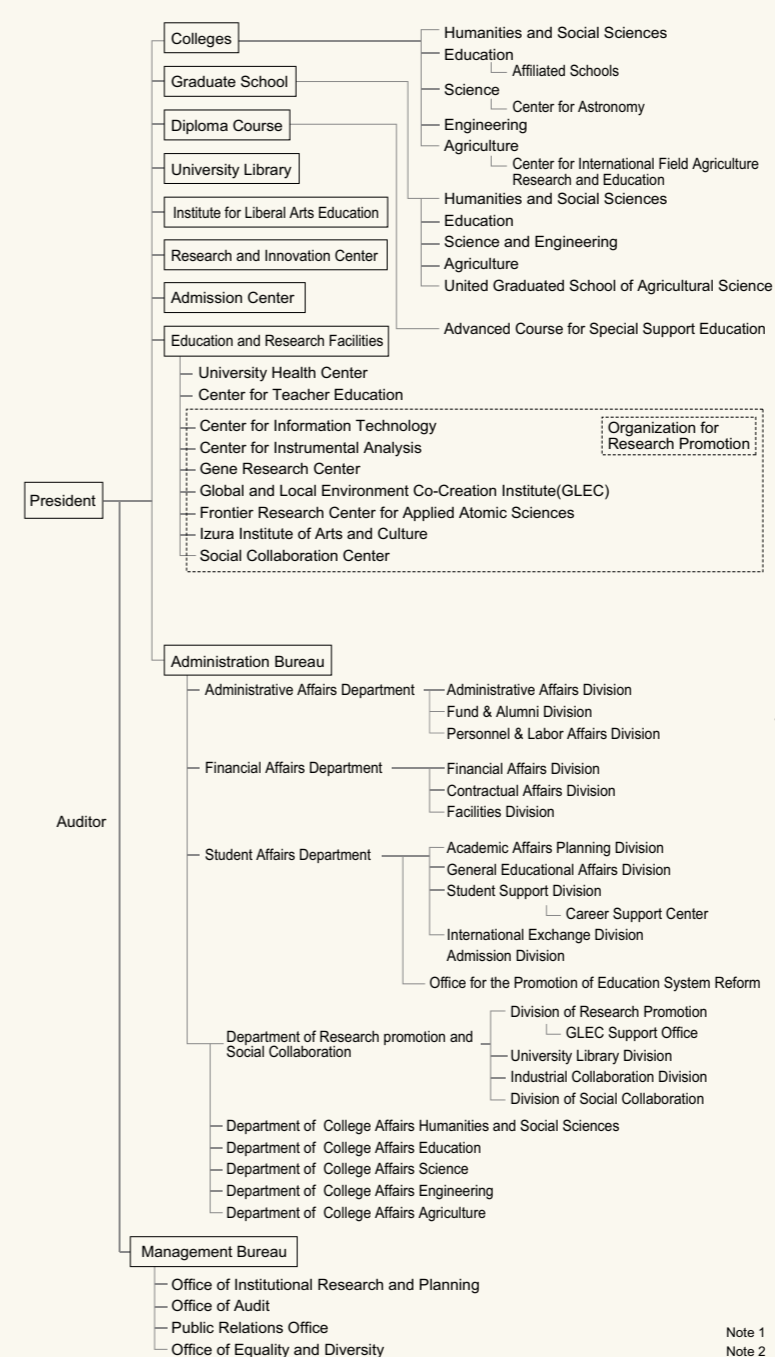


Graduates*(Academic Year 2020) Sum Total 483



Note: *Included graduates finished Ph.D program without dissertation.

Organization

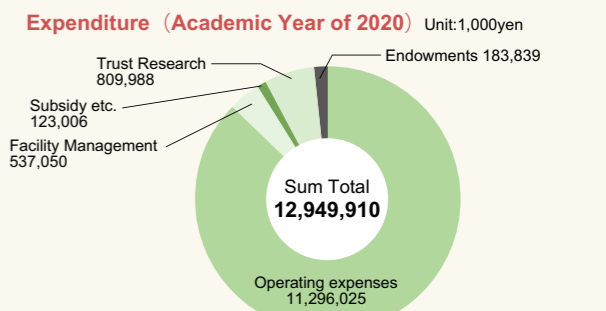
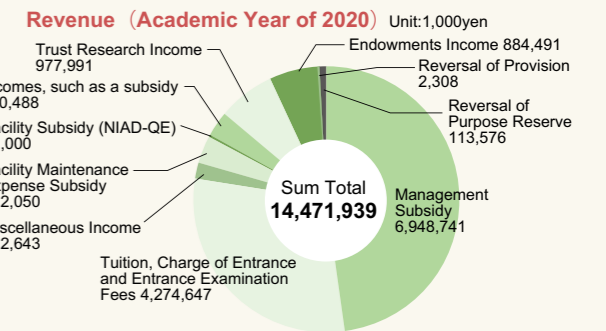


Number of Staff

Classification	Executives	Professor	Associate Professor	Lecturer	Assistant Professor	Institutional Assistant	School Teachers	Clerical Staff	Total
Executives	8(2)								8(2)
Administration								257(94)	257(94)
College of Humanities & Social Sciences		47(9)	26(7)	10(5)	1	3(1)			87(22)
College of Education		58(12)	28(7)	3(2)	11(4)		89(49)		189(74)
College of Engineering							21(1)		21(1)
Graduate School of Science & Engineering (Science)		45(3)	22(5)		3				70(8)
Graduate School of Science & Engineering (Engineering)		69(1)	46(2)	14(2)	29(4)				158(9)
Agriculture		31(1)	19(3)	2(1)	5(1)				57(6)
Institute for Liberal Arts Education		7(2)	11(2)	5(4)	4(2)				27(10)
Research & Innovation Center							3(1)		4(1)
Education & Research Facilities		5(1)	6	3	7(2)			4(2)	25(5)
Total	8(2)	262(29)	159(26)	37(14)	60(13)	3(1)	89(49)	285(98)	903(232)

Note: The figures in parentheses indicate the number of female staff.

Finances



Note 1 If the amount includes a fraction of less than one thousand yen, it shall be rounded down. Note 2 NIAD-QE: National Institution for Academic Degrees and Quality Enhancement of Higher Education.

Facts & Figures

Number of International Students

As of May 1, 2021

Countries/Area	Colleges							Graduate Schools					Sum Total
	Humanities and Social Sciences	Education	Science	Engineering	Agriculture	Institute for Liberal Arts	Total	Humanities and Social Sciences	Education	Science and Engineering	Agriculture	Total	
Iran										2		2	2
Indonesia						6(4)	6(4)				10(6)	10(6)	16(10)
Egypt										1		1	1
Syria										1		1	1
France										1		1	1
Vietnam	2(1)		2				4(1)	1(1)		1(1)		2(2)	6(3)
Peru		1					1						1
Malaysia				18(5)			18(5)			4(2)		4(2)	22(7)
Montenegro										1		1	1
Korea	1(1)		3(2)	2(1)		1(1)	7(5)						7(5)
Hong Kong			1				1						1
Taiwan			1	1		2(2)	4(2)			1		1	5(2)
China	16(11)		11(3)	34(6)	2(1)	1(1)	64(22)	19(14)	1(1)	66(12)	11(4)	97(31)	161(53)
Sum Total	19(13)	1	18(5)	55(12)	2(1)	10(8)	105 (39)	20(15)	1(1)	78(15)	21(10)	120(41)	225(80)

Note: The figures in parentheses indicate the number of female students.

Number of Students Studying Abroad

Academic Year of 2020

Classification	Colleges						Graduate Schools				Sum Total	
	Humanities and Social Sciences	Education	Science	Engineering	Agriculture	Total	Humanities and Social Sciences	Education	Science and Engineering	Total		
AIMS Program												
Overseas Study Tour										(1)	1	1
Foreign Exchange	1					1						1
Internship	16	10	2	11	9	48	2	1			3	51
Sum Total	17	10	2	11	9	49	2	1	1	4	53	

Note: The figures indicate online study abroad except for the numbers in parentheses.

Overseas Travel of Ibaraki University Staff

Academic Year of 2020

Region	Science	Global and Local Environment Co-creation Institute	Sum Total
Europe		1	1
North America	1		1
Asia		1	1
Sum Total	1	2	3

Visiting Scholars from Abroad

Academic Year of 2020

Countries/Area	Total
Iran	1
Cameroon	1
China	4
Sum Total	6